



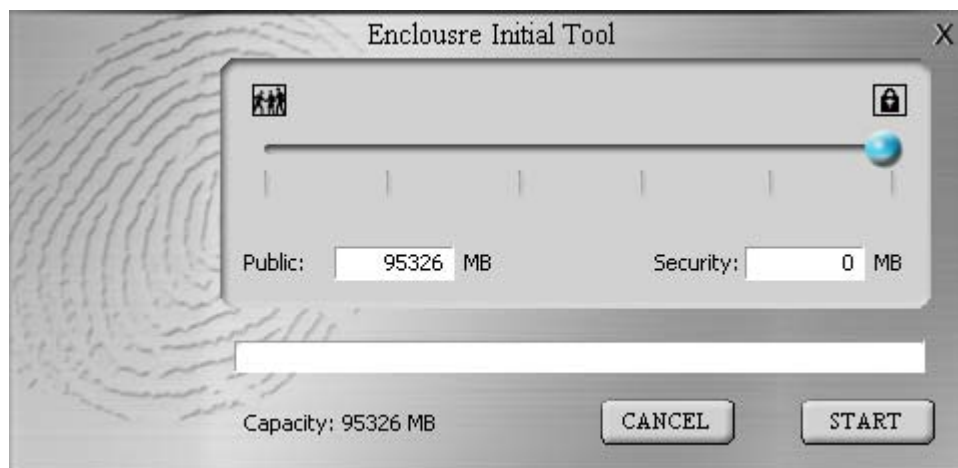
CAUQ Series Fingerprint Security Guide

The Cavalry Mobile External Storage unit is a device to secure your data via fingerprint, and to prevent unauthorized access. Once set up, the hard disk will appear after the fingerprint or password has been verified successfully.

How to use

Step 1: Insert HDD and plug the device into USB port.

Step 2: Double-click on the *setup.exe* icon to adjust the capacity of PUBLIC and SECURITY. Then click on START for partition procedure. This may take a few minutes.



Step 3: The fingerprint software will be loaded into HDD automatically after partitioning and formatting PUBLIC (E :) and SECURITY (F :)

Step 4: Execute the fingerprint software in AP Disk by double clicking to enable fingerprint features.

Registration of the fingerprint / password

Step 1: The window of fingerprint registration will show up.



Step 2: Put the mouse over the finger you want to register.



Step 3: Click the desired finger and click "Next" for registration. You can register up to 10 fingerprints.



Step 4: Exit "Fingerprint Registration".

Step 5: Put the same finger on the fingerprint sensor and slide as many times as necessary (3 or more).

Note: Your finger must be placed on sensor, then swipe the sensor from the bottom of the tip of the finger to the top of the tip of the finger.

Step 6: Return to "Fingerprint Registration". You can choose "End" to complete or "Back" to go back to step 3 to register another finger.

Step 7: After completing "Fingerprint Registration", the "Fingerprint Software Password Setting" window will appear.



The image shows a dialog box titled "Set Password Hint". It contains the following elements:

- A "Hint:" label followed by a checked checkbox labeled "Show Password Hint".
- A text input field for the hint.
- A label "Original Password (4-16 characters):" followed by a text input field.
- A label "New Password (4-16 characters):" followed by a text input field.
- A label "Confirm New Password:" followed by a text input field.
- At the bottom, there are two buttons: "Confirm" and "Cancel".

Step 8: Follow the instructions and type in the password. Then choose "Confirm" to finish.